

LEARNING JOURNEY

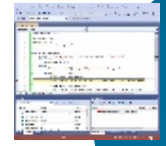
Take Note



C01: Network security: Threats to computer systems and networks. SUM2



C02: Identifying and preventing vulnerabilities.. SUM2



C02: Identify common errors and trace tables. Boolean Logic SUM1

Summer

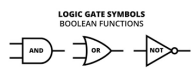
C01: Computer networks, connections and protocols. SUM1



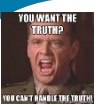
C01: Memory and Storage. SPR2



C01: Programming fundamentals. Boolean operators AND, OR and NOT. SPR2



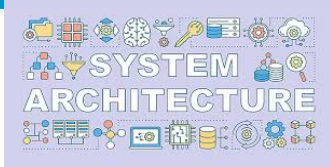
C02: Data types. SPR1



C02: Algorithms: Pseudo code. Interpret correct and complete algorithms. SPR1

Spring

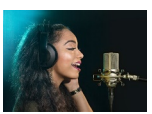
C01: System Architecture. SPR1



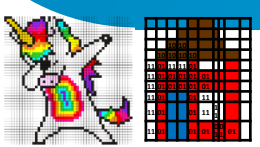
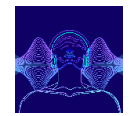
C02: Algorithms: Linear and Binary Search. AUT1



C02: Programming fundamentals. AUT2



Autumn



C01: Units of data storage. Numbers Binary, Binary Addition, logical shift, HEX, ASCII, Image, Sound and Compression AUT1



Exam board **OCR**. Computer Science consists of **two** compulsory **components**.
J277/01: Computer systems - Worth **80 marks**, representing **50%** of the total marks for the GCSE (9–1).
J277/02: Computational thinking, algorithms and programming - Worth **80 marks**, representing **50%** of the total marks for the GCSE (9–1).